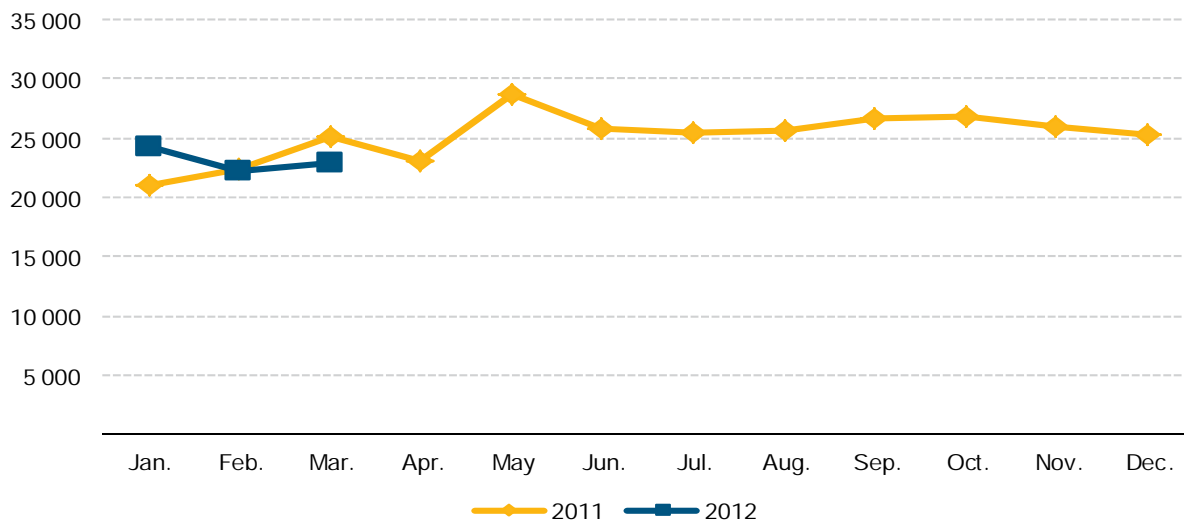


Asylum applicants and first instance decisions on asylum applications: first quarter 2012

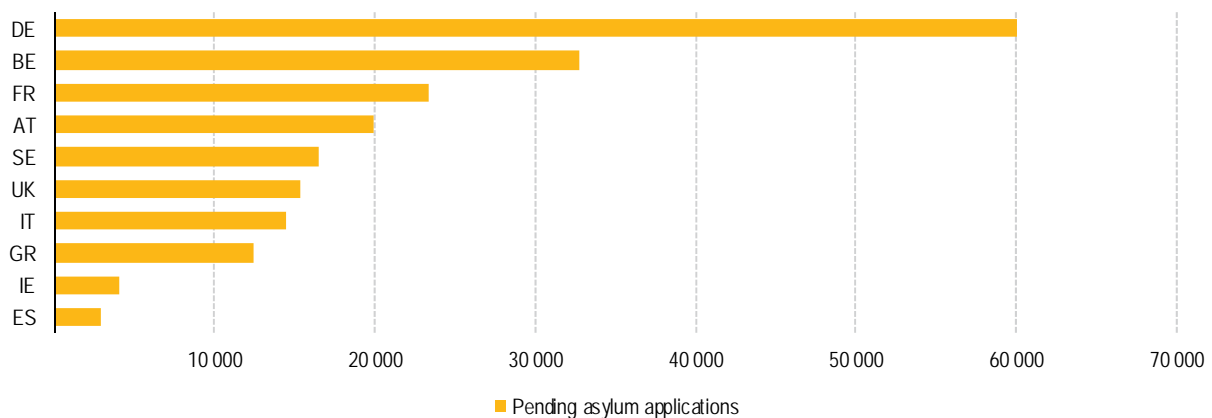
Number of asylum applicants only slightly changed in the EU-27 in Q1 2012 compared to the same quarter of 2011 and around 9 000 less compared to Q4 2011

Figure 1: Asylum applicants, EU-27, January 2011 – March 2012



Source: Eurostat (online data code: [migr_asyappctzm](#))

Figure 2: Pending asylum applications on 31st of March 2012 (1)

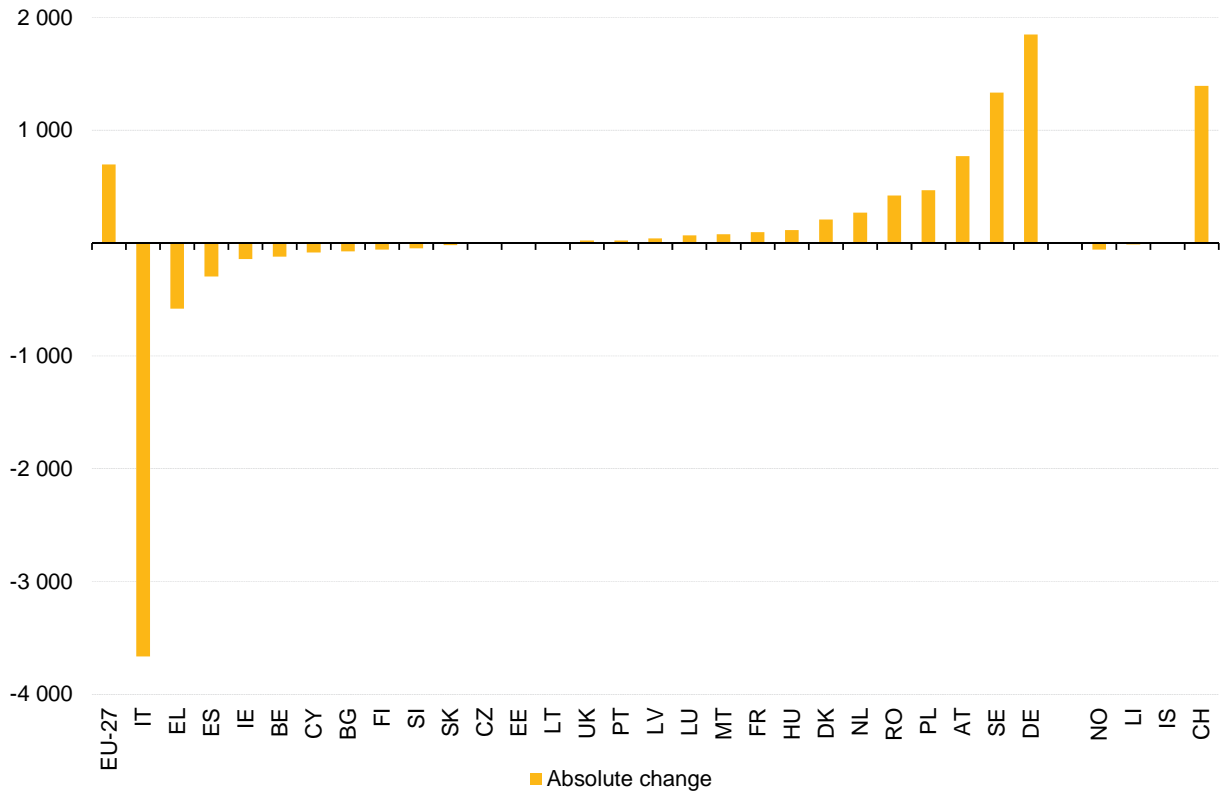


(1) Countries selected here are those with the highest number of pending applications in the reference period

Source: Eurostat (online data code: [migr_asyencctzm](#))

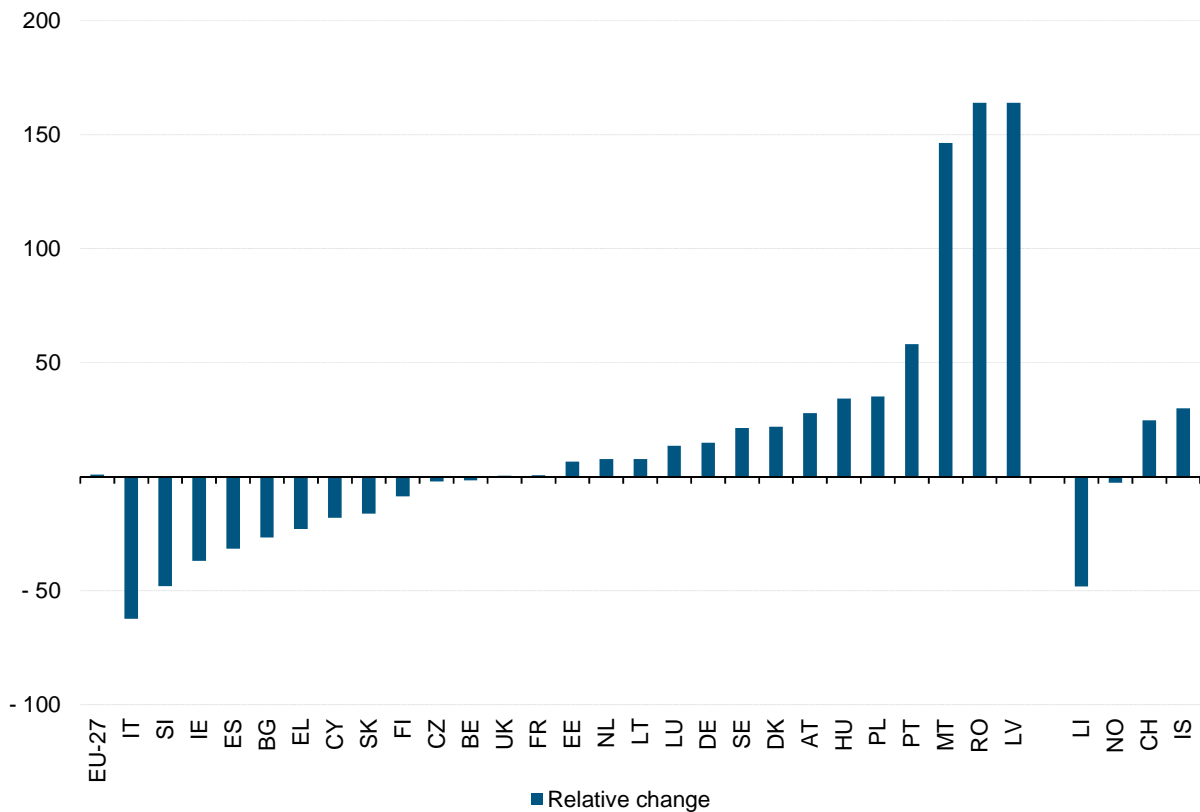
Italy reported the greatest fall in asylum applications in Q1 2012; nearly 4 000 fewer compared to Q1 2011

Figure 3: Asylum applicants, absolute change between Q1/2011 and Q1/2012



Source: Eurostat (online data code: [migr_asyappctzm](#))

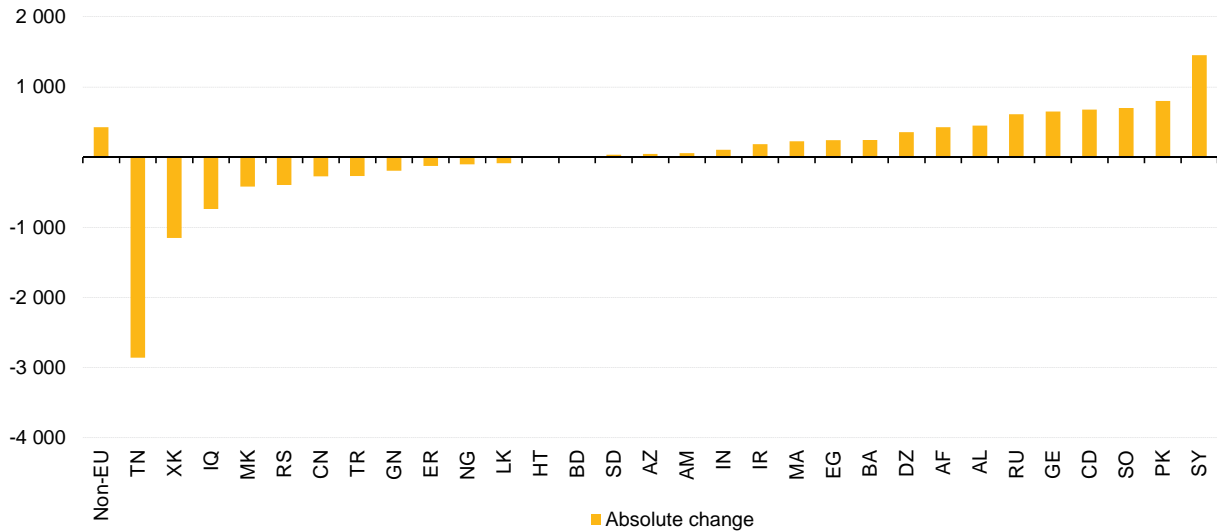
Figure 4: Asylum applicants, relative change between Q1/2011 and Q1/2012



Source: Eurostat (online data code: [migr_asyappctzm](#))

The number of Tunisian citizens seeking asylum in the EU-27 dropped far more than any other citizenship in Q1 2012 compared to Q1 2011; a decline of around 3 000 asylum applications

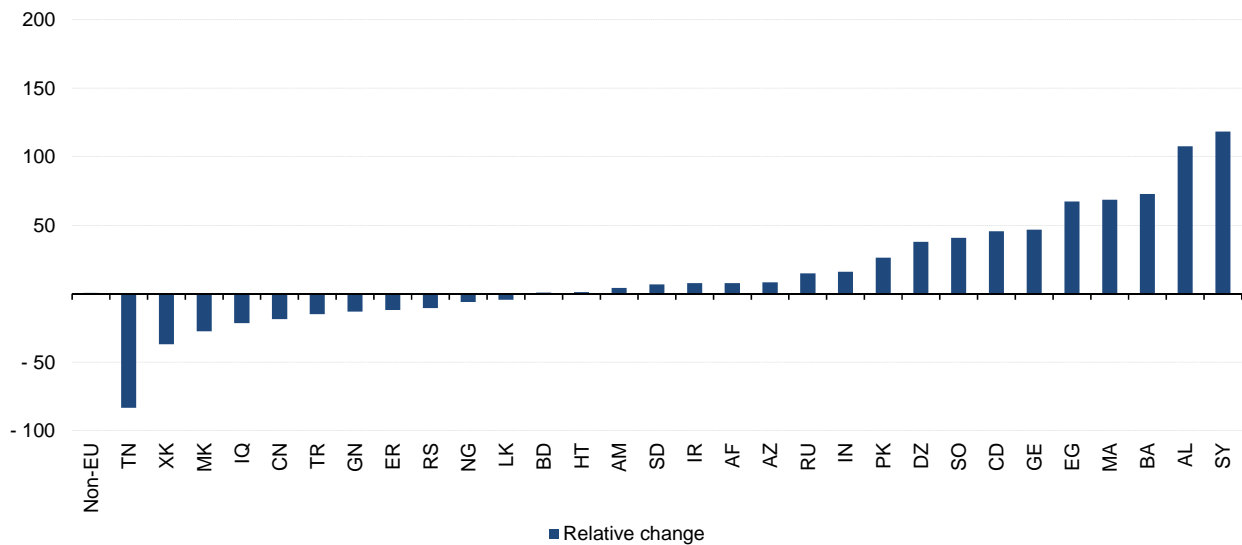
Figure 5: Asylum applicants by citizenship, EU-27 (*), absolute change between Q1/2011 and Q1/2012



* Data for NL are not available, see methodological notes
 Source: Eurostat (online data code: [migr_asyappctzm](#))

Applications by Syrians and Albanians more than doubled in relative terms in Q1 2012 compared to same quarter of previous year

Figure 6: Asylum applicants by citizenship, EU-27 (*), relative change between Q1/2011 and Q1/2012



* Data for NL are not available, see methodological notes
 Source: Eurostat (online data code: [migr_asyappctzm](#))

1 065 asylum applications per million inhabitants makes Luxembourg the country with the highest number of asylum applicants relative to population in the EU-27 in Q1 2012

Table 1: Asylum applicants (including new asylum applicants), Q1 2011 - Q1 2012 (rounded figures)

	Q1 2011			Q2 2011			Q3 2011			Q4 2011			Q1 2012			Applicants per million inhabitants (1) Q1 2012	Last 12 months			
	Jan.	Feb.	Mar.	Apr.	May	Jun.	Jul.	Aug.	Sep.	Oct.	Nov.	Dec.	Jan.	Feb.	Mar.					
EU-27	21 060	22 400	25 180	23 075	28 770	25 900	25 405	25 710	26 730	26 690	26 025	25 325	24 245	22 150	22 955	69 335	-11	1	140	303 170
Belgium	2 305	2 330	2 815	2 495	2 395	2 270	2 365	2 805	3 080	3 160	2 830	3 065	2 745	2 300	2 195	7 330	-19	-2	665	31 795
Bulgaria	115	90	70	65	60	65	70	85	65	80	80	40	75	65	65	200	1	-27	25	815
Czech Republic	65	55	70	60	75	45	60	60	75	65	75	40	60	65	60	185	3	-2	20	745
Denmark	360	280	315	285	290	270	260	300	355	430	380	420	395	315	455	1 165	-5	22	210	4 155
Germany	4 430	3 825	4 180	3 445	3 955	3 675	4 020	4 615	4 985	5 165	5 880	5 060	5 365	4 590	4 335	14 285	-11	15	175	55 110
Estonia	5	5	5	5	10	5	10	5	10	5	5	*	10	5	5	15	100	7	10	70
Ireland	135	125	125	85	100	115	110	115	95	70	115	95	100	85	60	245	-15	-37	55	1 150
Greece	605	920	1 005	455	815	685	990	650	790	740	875	785	555	680	710	1 950	-19	-23	175	8 730
Spain	240	335	365	430	365	215	175	280	370	260	205	175	215	215	215	645	0	-32	15	3 125
France	4 550	4 765	5 430	5 255	5 155	4 515	4 645	4 085	4 590	5 020	4 390	4 925	4 670	5 190	4 990	14 845	4	1	225	57 430
Italy	835	2 425	2 620	2 010	7 015	6 000	3 925	3 220	2 525	1 660	1 055	830	760	615	840	2 210	-38	-62	35	30 450
Cyprus	185	150	130	125	165	145	130	120	195	180	165	85	125	115	140	380	-12	-18	440	1 690
Latvia	5	20	5	15	15	40	25	60	50	30	25	15	10	25	35	65	-4	164	30	380
Lithuania	35	35	35	20	30	30	35	75	55	50	55	75	40	25	45	110	-39	8	35	535
Luxembourg	115	145	230	145	135	115	155	210	310	225	180	175	225	130	205	560	-4	14	1 065	2 215
Hungary	115	85	135	165	125	160	105	130	120	170	230	180	185	105	165	455	-21	34	45	1 835
Malta	10	15	30	130	365	100	25	15	25	85	35	60	80	25	30	135	-27	146	315	1 970
Netherlands	1 255	1 090	1 155	1 095	1 295	1 215	1 240	1 345	1 295	1 280	1 265	1 065	1 335	1 280	1 175	3 770	4	8	225	14 870
Austria	880	910	970	975	995	1 080	1 500	1 595	1 460	1 575	1 230	1 255	1 310	1 000	1 220	3 530	-13	28	420	15 195
Poland	365	450	520	430	550	550	490	735	665	720	660	780	490	570	740	1 805	-16	35	45	7 370
Portugal	10	20	15	15	20	15	30	20	40	25	15	45	35	5	25	70	-21	98	5	300
Romania	50	85	125	95	95	110	255	190	135	255	210	120	200	185	300	680	16	164	30	2 145
Slovenia	35	35	30	15	35	55	30	15	30	30	15	35	15	25	15	50	-36	-48	25	310
Slovakia	35	45	30	20	35	40	45	40	50	75	50	30	35	25	30	90	-43	-16	15	475
Finland	230	205	240	190	210	210	220	270	320	290	270	265	220	185	215	615	-25	-9	115	2 655
Sweden	1 985	1 960	2 305	2 030	2 375	1 960	2 065	2 570	2 800	3 035	3 115	3 495	2 720	2 370	2 475	7 565	-22	21	800	31 000
United Kingdom	2 140	1 985	2 225	2 020	2 070	2 235	2 395	2 100	2 240	2 195	2 620	2 200	2 280	1 900	2 200	6 385	-9	0	100	26 455
Iceland	*	5	5	5	15	5	5	10	10	10	5	10	5	5	5	15	-41	30	40	80
Liechtenstein	10	5	15	10	5	5	*	20	*	5	5	*	10	*	5	15	75	-3	365	60
Norway	810	640	685	665	875	810	715	820	875	765	670	665	780	640	665	2 075	-1	25	415	8 940
Switzerland	2 545	1 250	1 865	1 485	2 235	1 665	1 735	1 725	2 015	2 125	2 545	2 435	2 590	2 225	2 240	7 055	-1	-48	885	25 020

(1) Relative to population as of 1st of January 2012 (provisional data), see methodological notes

* 2 or fewer asylum applicants recorded in the reference period.

Source: Eurostat (online data code: migr.asyappozm)

Table 2: Asylum applicants in the EU-27 (*) by citizenship (including new asylum applicants), Q1 2011-Q1 2012 (rounded figures) (1)

	Q1 2011			Q2 2011			Q3 2011			Q4 2011			Q1 2012			Q1 2012 to Q1 2012 change in % (**)	Q4 2011 to Q1 2012 change in % (**)	Last 12 months
	Jan.	Feb.	Mar.	Apr.	May	Jun.	Jul.	Aug.	Sep.	Oct.	Nov.	Dec.	Jan.	Feb.	Mar.			
	21 060	22 400	25 180	23 075	28 770	25 900	25 405	25 710	26 730	26 890	26 025	25 325	22 910	20 890	21 765			
Non-EU																		65 565
Afghanistan - (AF)	1 945	1 860	2 225	1 915	2 265	2 440	2 550	2 760	2 720	2 660	2 425	2 255	2 130	1 790	2 095			6 015
Russia - (RU)	1 370	1 340	1 495	1 230	1 290	1 420	1 515	1 825	1 620	1 665	1 615	1 950	1 635	1 495	1 605			4 730
Pakistan - (PK)	910	1 005	1 165	950	1 285	1 295	1 450	1 475	1 540	1 520	1 650	1 460	1 300	1 220	1 330			3 850
Serbia - (RS)	1 245	1 180	1 385	855	625	385	425	600	1 045	1 780	2 355	2 105	1 515	1 020	855			3 390
Iraq - (IQ)	1 365	1 270	1 305	1 125	1 220	1 205	1 255	1 415	1 460	1 250	1 230	1 070	1 015	850	830			2 700
Syria - (SY)	435	375	440	460	565	555	690	835	935	910	850	835	880	920	880			2 680
Iran - (IR)	990	830	890	790	830	830	970	1 030	1 240	1 165	1 180	1 120	1 050	800	765			2 610
Somalia - (SO)	895	670	785	1 220	1 305	930	970	1 025	1 025	1 110	1 030	1 225	960	720	735			2 415
CD - (CD) (2)	420	475	590	495	525	525	495	490	585	570	585	530	680	775	705			2 160
Georgia - (GE)	430	480	545	430	530	530	640	665	705	695	690	720	585	695	765			2 045
Kosovo - (XK) (2)	1 020	995	1 115	1 045	910	620	545	670	730	695	725	795	670	560	740			1 970
Sri Lanka - (LK)	605	705	695	635	600	565	635	505	575	595	625	635	620	580	660			1 860
Bangladesh - (BD)	500	560	620	640	1 070	1 065	825	595	610	580	600	620	515	635	550			1 700
Nigeria - (NG)	535	540	610	690	1 900	1 805	1 140	1 205	1 160	815	620	455	545	465	530			1 540
Turkey - (TR)	625	625	575	490	580	485	505	445	425	585	570	545	470	550	495			1 510
Armenia - (AM)	435	490	570	615	675	615	640	600	580	610	580	695	495	530	390			1 415
Algeria - (DZ)	305	285	360	285	345	360	475	350	415	490	360	365	510	370	425			1 300
Guinea - (GN)	475	510	565	450	560	515	550	515	510	535	525	530	445	400	445			1 290
China - (CN)	445	450	565	425	450	465	460	440	485	460	420	470	405	370	415			1 185
MK - (MK) (2)	415	400	735	975	675	180	170	330	410	420	445	385	440	390	280			1 110
Eritrea - (ER)	380	370	385	700	675	455	425	520	535	465	390	395	310	285	320			915
Albania - (AL)	120	140	160	200	155	160	170	220	295	785	365	290	285	245	335			865
India - (IN)	225	215	225	230	240	240	270	215	260	215	255	195	260	220	290			765
Haiti - (HT)	215	195	205	260	185	180	190	145	180	220	165	140	160	225	235			620
Azerbaijan - (AZ)	245	200	165	145	160	195	215	220	220	205	265	250	240	200	175			615
Egypt - (EG)	95	120	160	110	155	160	175	205	195	230	270	225	230	180	190			600
BA - (BA) (2)	100	115	135	110	155	185	115	230	350	250	270	580	185	190	210			585
Tunisia - (TN)	120	1 700	1 610	320	480	275	320	365	420	400	175	160	185	155	225			565
Morocco - (MA)	90	120	130	110	135	130	245	200	185	215	220	185	185	195	180			560
Sudan - (SD)	165	180	200	200	320	400	340	265	350	265	210	225	195	160	195			550
Other	3 935	3 995	4 565	4 965	7 905	6 725	6 030	5 360	4 960	4 520	4 365	3 925	3 815	3 715	3 910			11 440

(*) Data for NL for Q1 2012 are not available, see methodological notes

(1) Countries selected here are those with the highest number of asylum applicants registered during Q1 2012

(**) Due to missing data the calculations of these indicators do not include data for NL for Q1 2011 and Q4 2011

(2) CD - Congo, the Democratic Republic of the; Kosovo - Kosovo / UNSCR 1244; MK - the former Yugoslav republic of Macedonia; BA - Bosnia and Herzegovina

Source: Eurostat (online data code: [migr_asyappctzm](#))

One out of four asylum applicants in the EU-27 was aged below 18 in Q1 2012

Table 3: Asylum applicants by age group (*), 1st quarter 2012 (%)

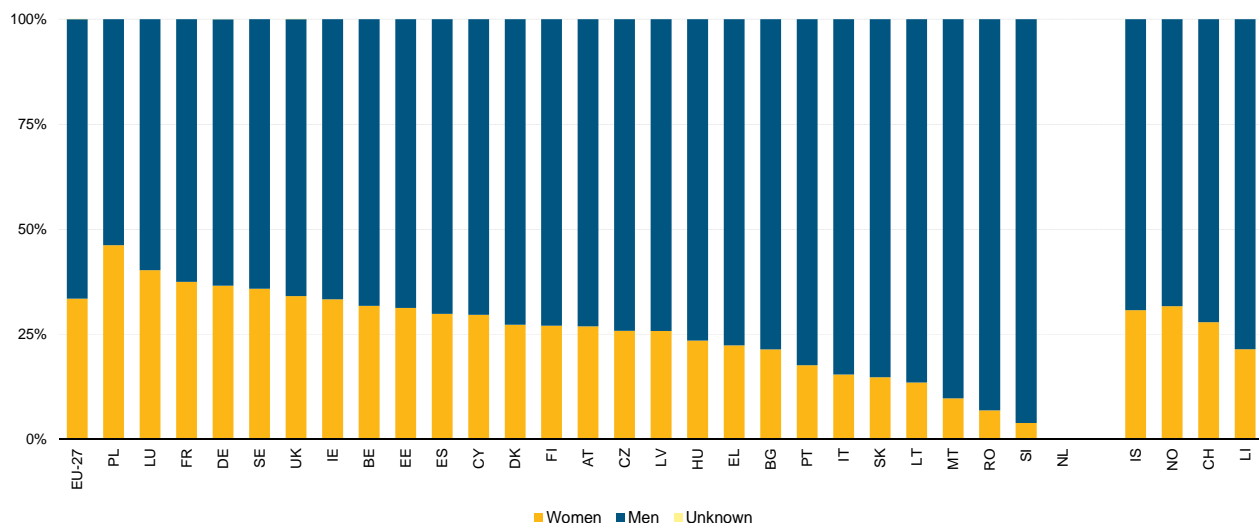
	Total (absolute value)	Distribution of age groups as a share of total (in %)					
		0-13	14-17	18-34	35-64	65 and over	Unknown
EU-27	69 335	18.1	6.4	49.3	19.7	0.8	0.2
Belgium	7 330	18.7	8.5	53.8	18.5	0.5	0.0
Bulgaria	200	13.4	7.0	58.2	16.9	4.5	0.0
Czech Republic	185	14.5	1.1	42.5	40.9	1.1	0.0
Denmark	1 165	14.2	8.3	56.4	20.1	1.0	0.0
Germany	14 285	25.1	7.6	46.8	19.5	1.0	0.0
Estonia	15	18.8	12.5	31.3	37.5	0.0	0.0
Ireland	245	25.9	3.7	50.6	19.8	0.0	0.0
Greece	1 950	3.7	1.8	79.5	14.9	0.1	0.0
Spain	645	13.1	3.7	63.1	19.9	0.2	0.0
France	14 845	17.8	2.5	52.9	25.8	1.0	0.0
Italy	2 210	7.1	10.8	67.2	14.8	0.0	0.0
Cyprus	380	2.6	2.1	44.4	48.4	0.0	2.4
Latvia	65	10.6	3.0	65.2	21.2	0.0	0.0
Lithuania	110	9.9	1.8	59.5	28.8	0.0	0.0
Luxembourg	560	28.1	6.3	43.6	21.3	0.7	0.0
Hungary	455	19.8	9.7	56.5	13.6	0.4	0.0
Malta	135	4.5	9.0	70.7	15.8	0.0	0.0
Netherlands	3 770	:	:	:	:	:	:
Austria	3 530	23.1	12.1	48.4	15.9	0.5	0.0
Poland	1 805	35.3	4.6	37.6	22.0	0.4	0.0
Portugal	70	1.5	5.9	72.1	20.6	0.0	0.0
Romania	680	2.1	4.6	82.4	10.9	0.1	0.0
Slovenia	50	9.8	29.4	45.1	15.7	0.0	0.0
Slovakia	90	8.0	0.0	64.8	27.3	0.0	0.0
Finland	615	19.1	6.6	55.6	17.8	0.3	0.5
Sweden	7 565	20.7	10.8	47.6	19.3	1.6	0.0
United Kingdom	6 385	14.7	6.0	53.0	22.8	0.9	2.4
Iceland	15	7.7	0.0	69.2	23.1	0.0	0.0
Liechtenstein	15	15.9	9.4	57.1	16.9	0.7	0.0
Norway	2 075	20.7	4.7	59.2	15.2	0.1	0.0
Switzerland	7 055	7.1	0.0	42.9	42.9	7.1	0.0

(*) Age disaggregation not available for NL, see methodological notes; distribution by age for EU-27 is based on those countries for which data are available

: Data are not available in the reference period

Source: Eurostat (online data code [migr_asyappctzm](#))

Figure 7: Asylum applicants by gender, 1st quarter 2012 (%)



Data for NL are not available, see methodological notes

Source: Eurostat (online data code: [migr_asyappctzm](#))

Only one out of ten Tunisian, Bangladeshi and Indian asylum applicants in the EU-27 in Q1 2012 were women

Table 4: Thirty main citizenships of asylum applicants in the EU-27 (*), by age group, 1st quarter 2012 (in %) ⁽¹⁾

	Total (absolute value)	Distribution of age groups as a share of total (in %)					
		0-13	14-17	18-34	35-64	65 and over	Unknown
Non-EU	65 565	19.2	6.7	52.1	20.8	0.9	0.3
Afghanistan - (AF)	6 015	18.6	24.9	44.0	10.8	1.5	0.1
Russia - (RU)	4 730	40.8	4.2	32.8	21.5	0.7	0.0
Pakistan - (PK)	3 850	11.7	3.5	63.7	20.0	0.8	0.4
Serbia - (RS)	3 390	37.9	6.6	32.1	22.9	0.5	0.0
Iraq - (IQ)	2 700	28.4	7.1	43.5	18.7	2.2	0.1
Syria - (SY) ⁽²⁾	2 680	21.6	4.9	47.4	24.2	1.6	0.3
Iran - (IR)	2 610	11.7	4.5	56.3	26.2	0.7	0.7
Somalia - (SO)	2 415	12.2	7.5	65.4	12.8	1.9	0.1
CD - (CD) ⁽²⁾	2 160	19.3	5.3	50.8	23.9	0.5	0.2
Georgia - (GE)	2 045	15.7	2.5	52.3	28.6	0.9	0.0
Kosovo - (XK) ⁽²⁾	1 970	31.5	5.1	41.1	21.6	0.7	0.1
Sri Lanka - (LK)	1 860	10.6	1.3	63.9	22.2	1.2	0.8
Bangladesh - (BD)	1 700	4.5	2.7	73.1	18.7	0.1	0.8
Nigeria - (NG)	1 540	17.9	3.8	59.8	17.9	0.1	0.5
Turkey - (TR)	1 510	8.6	3.8	69.8	17.1	0.7	0.0
Armenia - (AM)	1 415	20.6	4.1	38.2	34.6	2.5	0.0
Algeria - (DZ)	1 300	4.2	4.8	72.8	17.7	0.4	0.0
Guinea - (GN)	1 290	13.3	9.1	68.7	8.8	0.2	0.0
China - (CN)	1 185	10.0	1.9	47.9	39.4	0.3	0.5
MK - (MK) ⁽²⁾	1 110	33.3	8.0	33.0	25.0	0.6	0.0
Eritrea - (ER)	915	14.4	3.6	65.2	15.9	0.8	0.1
Albania - (AL)	865	22.9	10.0	48.5	17.4	0.9	0.2
India - (IN)	765	2.6	1.7	73.0	20.9	0.1	1.7
Haiti - (HT)	620	5.0	0.8	61.5	32.5	0.2	0.0
Azerbaijan - (AZ)	615	26.8	4.1	36.4	28.5	4.2	0.0
Egypt - (EG)	600	17.8	5.5	56.1	20.1	0.5	0.0
BA - (BA) ⁽²⁾	585	40.8	6.8	32.4	19.1	0.9	0.0
Tunisia - (TN)	565	1.4	0.9	82.5	15.2	0.0	0.0
Morocco - (MA)	560	2.1	8.2	73.2	16.4	0.0	0.0
Sudan - (SD)	550	8.9	2.9	70.3	16.2	0.2	1.5
Other	11 440	16.1	5.5	54.9	22.7	0.5	0.4

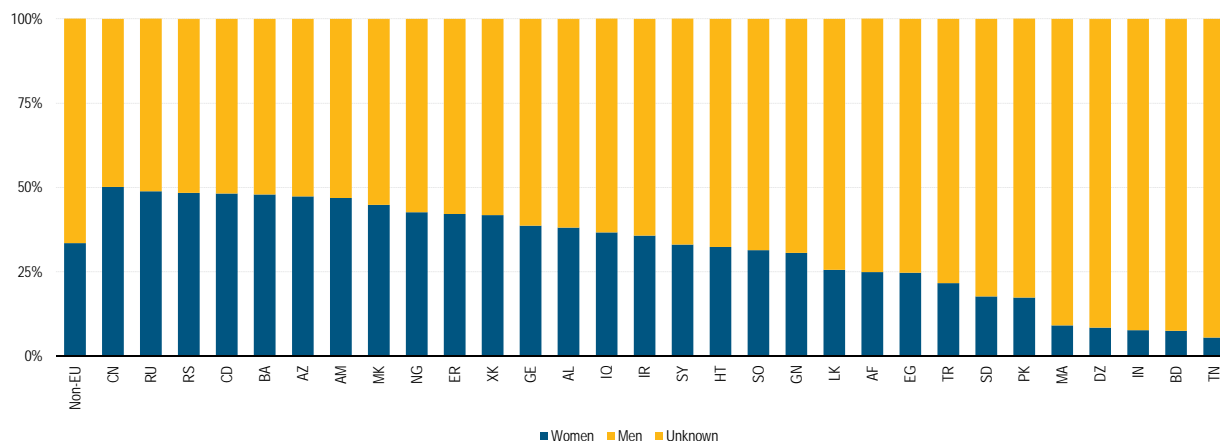
(*) Data for NL are not available, see methodological notes

⁽¹⁾ Citizenship selected here are those with the highest number of asylum applicants registered during Q1 2012 in the EU-27

⁽²⁾ Syria – Syrian Arab Republic; CD – Congo, the Democratic Republic of the; Kosovo – Kosovo / UNSCR 1244; MK – the Former Yugoslav Republic of Macedonia; BA – Bosnia and Herzegovina

Source: Eurostat (online data code: [migr_asyappctzm](#))

Figure 8: Thirty main citizenships of asylum applicants in the EU-27 (*), by gender, 1st quarter 2012 (in %) ⁽¹⁾



(*) Data for NL are not available, see methodological notes

⁽¹⁾ Citizenship selected here are those with the highest number of asylum applicants registered during Q1 2012 in the EU-27

Source: Eurostat (online data code: [migr_asyappctzm](#))

Table 5: Five main citizenships of asylum applicants, 1st quarter 2012 (rounded figures) ⁽¹⁾

EU-27 ⁽²⁾			#	%
Afghanistan			6 015	9
Russia			4 730	7
Pakistan			3 850	6
Serbia			3 390	5
Iraq			2 700	4
Other			44 880	68
BELGIUM			#	%
Afghanistan			850	12
Russia			650	9
Guinea			550	8
CD			470	6
XK			440	6
Other			4 370	60
DENMARK			#	(%)
Afghanistan			150	13
Iran			100	9
Russia			100	9
Somalia			85	7
Iraq			45	4
Other			680	58
IRELAND			#	(%)
Nigeria			35	15
Albania			15	5
Moldova			10	5
South Africa			10	5
Mauritius			10	4
Other			160	66
FRANCE			#	(%)
Russia			1 465	10
CD			1 395	9
Armenia			895	6
Bangladesh			680	5
Turkey			670	4
Other			9 740	66
LATVIA			#	(%)
Georgia			35	53
CD			20	30
Russia			*	*
Serbia			*	*
Algeria			*	*
Other			10	2
HUNGARY			#	(%)
Afghanistan			230	51
XK			35	8
Pakistan			35	8
Somalia			15	3
Algeria			10	3
Other			125	27
AUSTRIA			#	(%)
Afghanistan			880	25
Russia			575	16
Algeria			165	5
Iran			155	4
Pakistan			140	4
Other			1 610	46
ROMANIA			#	(%)
Algeria			255	38
Morocco			100	15
Afghanistan			75	11
Tunisia			25	4
China			15	2
Other			210	31
FINLAND			#	(%)
Iraq			130	21
Russia			50	8
Syria			45	8
Somalia			35	6
Afghanistan			35	6
Other			310	51
LIECHTENSTEIN			#	(%)
Russia			5	29
Ukraine			5	29
MK			*	*
Croatia			*	*
Nigeria			*	*
Other			*	*
EU-27 ⁽²⁾			#	%
Iraq			85	41
Syria			25	13
Afghanistan			20	9
Iran			10	5
Pakistan			10	5
Other			55	27
GERMANY			#	(%)
Serbia			1 980	14
Afghanistan			1 930	14
Iraq			1 415	10
Iran			980	7
Pakistan			865	6
Other			7 110	50
GREECE			#	(%)
Georgia			230	12
Bangladesh			135	7
Senegal			120	6
Dominican Republic			115	6
Afghanistan			95	5
Other			1 255	64
ITALY			#	(%)
Nigeria			245	11
Afghanistan			225	10
Tunisia			185	8
Senegal			140	6
Egypt			135	6
Other			1 285	58
LITHUANIA			#	(%)
Russia			15	15
Afghanistan			10	11
Belarus			10	8
Ukraine			*	*
Cameroon			*	*
Other			70	63
MALTA			#	(%)
Libya			20	14
Egypt			5	2
Guinea			5	2
Chad			*	*
CD			*	*
Other			105	80
POLAND			#	(%)
Russia			1 070	59
Georgia			505	28
Kazakhstan			50	3
Armenia			45	2
Afghanistan			20	1
Other			115	6
SLOVENIA			#	(%)
Turkey			10	22
Somalia			10	18
Morocco			5	10
Serbia			5	6
Algeria			5	6
Other			20	39
SWEDEN			#	(%)
Somalia			1 355	18
Afghanistan			1 015	13
Serbia			610	8
Syria			470	6
Eritrea			410	5
Other			3 710	49
NORWAY			#	(%)
Somalia			485	23
Afghanistan			225	11
Eritrea			170	8
Belarus			95	5
Russia			80	4
Other			1 020	49
ICELAND			#	%
Iran			5	31
Nigeria			*	*
Algeria			*	*
Senegal			*	*
Colombia			*	*
Other			5	31
CZECH REPUBLIC			#	(%)
Ukraine			40	23
Vietnam			15	8
Syria			15	8
Belarus			10	6
Mongolia			10	6
Other			90	49
ESTONIA			#	(%)
Vietnam			5	25
Belarus			5	19
Georgia			5	19
Russia			*	*
Turkey			*	*
Other			*	0
SPAIN			#	(%)
Nigeria			65	10
Algeria			40	6
Ivory Coast			40	6
Cameroon			35	5
Cuba			25	4
Other			440	68
CYPRUS			#	(%)
Syria			75	20
Pakistan			55	14
Bangladesh			50	14
Egypt			35	9
India			20	6
Other			140	37
LUXEMBOURG			#	(%)
Serbia			170	31
Albania			80	14
XK			65	12
MK			65	12
Montenegro			60	11
Other			115	21
NETHERLANDS			#	(%)
PORTUGAL			#	(%)
Guinea			20	32
Somalia			5	10
CD			5	6
Nigeria			5	6
Belarus			5	4
Other			30	41
SLOVAKIA			#	(%)
Afghanistan			10	11
Moldova			5	8
CD			5	7
Somalia			5	7
Bangladesh			5	7
Other			55	60
UNITED KINGDOM			#	(%)
Pakistan			1 175	18
Iran			725	11
Nigeria			305	5
Bangladesh			285	4
Afghanistan			275	4
Other			3 620	57
SWITZERLAND			#	(%)
Eritrea			1 150	16
Nigeria			675	10
Tunisia			665	9
Serbia			660	9
MK			290	4
Other			3 615	51

⁽¹⁾ Citizenship selected here are those with the highest number of asylum applicants registered during Q1 2012 in the EU-27

⁽²⁾ Data for NL are not available, see methodological notes

Absolute number of asylum applications

Syria – Syrian Arab Republic; CD – Congo, the Democratic Republic of the; Kosovo – Kosovo / UNSCR 1244; MK – the Former Yugoslav Republic of Macedonia; BA – Bosnia and Herzegovina

Source: Eurostat (online data code: [migr_asyappctzm](#))

Table 6: Thirty main citizenships of asylum applicants by destination country in the EU-27 (*), 1st quarter 2012 (rounded figures) (1)

			NON-EU		#	(%)
AF - (AF)						
Germany	1 930	32				
Sweden	1 015	17				
Austria	880	15				
Belgium	850	14				
United Kingdom	275	5				
Other	1 065	18				
SERBIA - (RS)						
Germany	1 980	58				
Sweden	610	18				
Belgium	265	8				
France	210	6				
Luxembourg	170	5				
Other	155	5				
IRAN - (IR)						
Germany	980	38				
United Kingdom	725	28				
Sweden	265	10				
Austria	155	6				
Belgium	120	5				
Other	360	14				
GEORGIA - (GE)						
France	665	33				
Poland	505	25				
Greece	230	11				
Germany	200	10				
Sweden	120	6				
Other	325	16				
BD - (BD)						
France	680	40				
Belgium	295	17				
United Kingdom	285	17				
Greece	135	8				
Italy	70	4				
Other	235	14				
ARMENIA - (AM)						
France	895	63				
Belgium	165	12				
Germany	140	10				
Austria	65	5				
Sweden	60	4				
Other	85	6				
CHINA - (CN)						
France	615	52				
United Kingdom	215	18				
Germany	100	9				
Belgium	75	6				
Austria	70	6				
Other	110	9				
ALBANIA - (AL)						
United Kingdom	175	20				
France	175	20				
Belgium	150	17				
Sweden	135	15				
Greece	90	10				
Other	145	17				
AZ - (AZ)						
France	280	46				
Germany	175	28				
Sweden	75	12				
Belgium	25	4				
Austria	20	3				
Other	40	7				
TUNISIA - (TN)						
Italy	185	33				
Germany	105	19				
Austria	65	11				
France	60	11				
Sweden	40	7				
Other	110	20				
RUSSIA - (RU)						
France	1 465	31				
Poland	1 070	23				
Belgium	650	14				
Austria	575	12				
Germany	560	12				
Other	410	9				
IRAQ - (IQ)						
Germany	1 415	52				
Belgium	300	11				
Sweden	280	10				
Finland	130	5				
Austria	125	5				
Other	445	17				
SOMALIA - (SO)						
Sweden	1 355	56				
Germany	220	9				
United Kingdom	165	7				
Austria	130	5				
France	125	5				
Other	415	17				
KOSOVO - (XK)						
France	570	29				
Germany	480	24				
Belgium	440	22				
Sweden	240	12				
Luxembourg	65	3				
Other	170	9				
NIGERIA - (NG)						
United Kingdom	305	20				
Italy	245	16				
Germany	240	16				
France	220	14				
Austria	125	8				
Other	405	26				
ALGERIA - (DZ)						
France	335	26				
Romania	255	20				
Austria	165	13				
Germany	115	9				
United Kingdom	85	7				
Other	340	26				
MK - (MK)						
Germany	610	55				
Belgium	200	18				
Sweden	105	10				
France	100	9				
Luxembourg	65	6				
Other	30	3				
INDIA - (IN)						
United Kingdom	255	34				
Germany	220	29				
Austria	95	13				
Greece	45	6				
Belgium	35	5				
Other	110	14				
EGYPT - (EG)						
Italy	135	22				
France	110	18				
United Kingdom	75	12				
Greece	70	11				
Germany	55	9				
Other	160	26				
MOROCCO - (MA)						
Germany	115	21				
Romania	100	18				
Austria	85	15				
Sweden	50	9				
Italy	45	8				
Other	165	29				
PAKISTAN - (PK)						
United Kingdom	1 175	31				
Germany	865	22				
France	440	11				
Greece	420	11				
Italy	270	7				
Other	680	18				
SYRIA - (SY)						
Germany	1 025	38				
Sweden	470	17				
Denmark	210	8				
United Kingdom	195	7				
Austria	160	6				
Other	625	23				
CD - (CD)						
France	1 395	65				
Belgium	470	22				
United Kingdom	80	4				
Germany	70	3				
Sweden	25	1				
Other	120	5				
SRI LANKA - (LK)						
France	1 090	58				
United Kingdom	485	26				
Germany	130	7				
Belgium	55	3				
Italy	20	1				
Other	80	4				
TURKEY - (TR)						
France	670	44				
Germany	455	30				
Belgium	90	6				
Austria	85	6				
Italy	70	5				
Other	140	9				
GUINEA - (GN)						
Belgium	550	43				
France	515	40				
Germany	90	7				
Italy	25	2				
Portugal	20	2				
Other	90	7				
ERITREA - (ER)						
Sweden	410	45				
United Kingdom	165	18				
Germany	145	16				
France	125	13				
Greece	20	2				
Other	55	6				
HAITI - (HT)						
France	615	99				
Belgium		0				
Denmark		0				
Germany		0				
Ireland		0				
Other		0				
BA - (BA)						
Sweden	220	37				
Germany	140	24				
France	110	19				
Belgium	50	9				
Italy	20	3				
Other	50	9				
SUDAN - (SD)						
France	195	35				
United Kingdom	185	34				
Germany	40	8				
Sweden	30	6				
Greece	25	5				
Other	70	13				

(*) Data for NL are not available, see methodological notes

(1) Citizenships selected here are those with the highest number of asylum applicants registered during Q1 2012 in the EU-27

Absolute number of asylum applications

AF – Afghanistan; Syria – Syrian Arab Republic; CD – Congo, the Democratic Republic of the; Kosovo – Kosovo / UNSCR 1244; BD – Bangladesh; MK – the Former Yugoslav Republic of Macedonia; AZ – Azerbaijan; BA – Bosnia and Herzegovina

Source: Eurostat (online data code: [migr_asyappctzm](#))

Table 7: New asylum applicants, Q1 2011 - Q1 2012 (rounded figures)

	Q1 2011			Q2 2011			Q3 2011			Q4 2011			Q1 2012			Last 12 months				
	Jan.	Feb.	Mar.	Apr.	May	Jun.	Jul.	Aug.	Sep.	Oct.	Nov.	Dec.	Jan.	Feb.	Mar.					
	:	:	:	:	:	:	:	:	:	:	:	:	:	:	:					
EU-27	1 870	1 840	2 300	2 065	1 805	1 690	1 795	2 310	2 545	2 655	2 290	2 195	1 855	1 540	1 515	4 905	-31	445	24 255	
Belgium	100	80	60	45	25	45	60	70	55	70	65	30	60	55	50	165	-31	25	630	
Bulgaria	30	30	40	35	40	30	45	40	60	50	50	30	45	55	40	135	4	15	515	
Czech Republic	360	280	315	285	290	270	280	300	355	430	380	420	395	315	455	1 165	-5	210	4 155	
Denmark	3 895	3 365	3 625	3 030	3 495	3 255	3 550	4 060	4 185	4 185	4 885	4 170	4 560	3 800	3 595	11 955	-10	145	46 770	
Germany	5	5	5	5	10	5	10	5	10	5	5	*	10	5	5	15	100	7	65	
Estonia	135	125	125	85	100	115	110	110	95	70	115	95	100	85	55	240	-16	55	1 140	
Ireland	605	920	1 005	455	815	685	990	650	790	740	875	785	555	680	710	1 950	-19	175	8 730	
Greece	205	270	270	375	305	190	155	265	355	235	190	160	200	190	180	565	-3	10	2 795	
Spain	4 150	4 325	4 920	4 785	4 625	4 125	4 220	3 695	4 205	4 610	3 960	4 520	4 175	4 660	4 430	13 265	1	205	52 010	
France	835	2 425	2 620	2 010	7 015	6 000	3 925	3 220	2 525	1 660	1 055	830	760	615	840	2 210	-38	35	30 450	
Italy	185	145	130	120	160	145	130	115	190	175	165	85	120	115	135	370	-13	430	30 450	
Cyprus	5	20	5	15	40	25	60	50	55	30	25	10	10	25	30	65	-4	30	375	
Latvia	10	30	25	10	15	15	25	70	40	45	50	70	40	20	35	100	-38	30	440	
Lithuania	105	145	230	145	130	95	150	210	310	60	170	165	220	270	200	690	75	44	2 125	
Luxembourg	:	60	:	:	:	:	:	:	:	:	:	:	:	:	:	:	:	:	:	:
Hungary	10	15	30	1 130	365	100	25	15	20	75	35	55	75	20	30	125	-23	159	1 940	
Malta	1 045	915	890	815	1 050	980	1 010	1 050	1 015	1 050	955	790	935	900	835	2 670	-4	160	11 380	
Netherlands	:	:	:	:	:	:	:	:	:	:	:	:	:	:	:	:	:	:	:	:
Austria	125	260	330	295	355	385	375	590	525	560	540	645	390	445	590	1 430	-18	100	5 695	
Poland	10	20	15	15	20	15	30	20	40	25	15	45	35	5	25	70	-21	58	300	
Portugal	45	85	120	95	90	105	250	190	135	255	210	120	195	185	290	670	14	170	2 115	
Romania	30	35	30	15	20	45	20	15	30	25	10	30	10	20	10	40	-41	20	255	
Slovenia	15	25	10	15	20	20	25	25	40	65	40	20	20	10	15	40	-66	10	310	
Slovakia	:	:	:	:	:	:	:	:	:	:	:	:	:	:	:	575	:	105	310	
Finland	1 960	1 955	2 300	2 030	2 370	1 960	2 060	2 570	2 800	3 030	3 115	3 495	2 720	2 370	2 470	7 560	-22	795	30 990	
Sweden	2 040	1 890	2 140	1 940	2 005	2 155	2 320	2 010	2 160	2 115	2 535	2 130	2 200	1 835	2 145	6 185	-9	100	25 550	
United Kingdom	:	:	:	:	:	:	:	:	:	:	:	:	:	:	:	:	:	:	:	:
Iceland	:	:	:	:	:	:	:	:	:	:	:	:	:	:	:	:	:	:	:	:
Liechtenstein	:	:	:	:	:	:	:	:	:	:	:	:	:	:	:	:	:	:	:	:
Norway	:	:	:	:	:	:	:	:	:	:	:	:	:	:	:	:	:	:	:	:
Switzerland	1 050	1 055	1 595	1 295	2 005	1 430	1 465	1 485	1 755	1 815	2 195	2 090	2 255	1 915	1 900	6 070	-1	765	21 605	

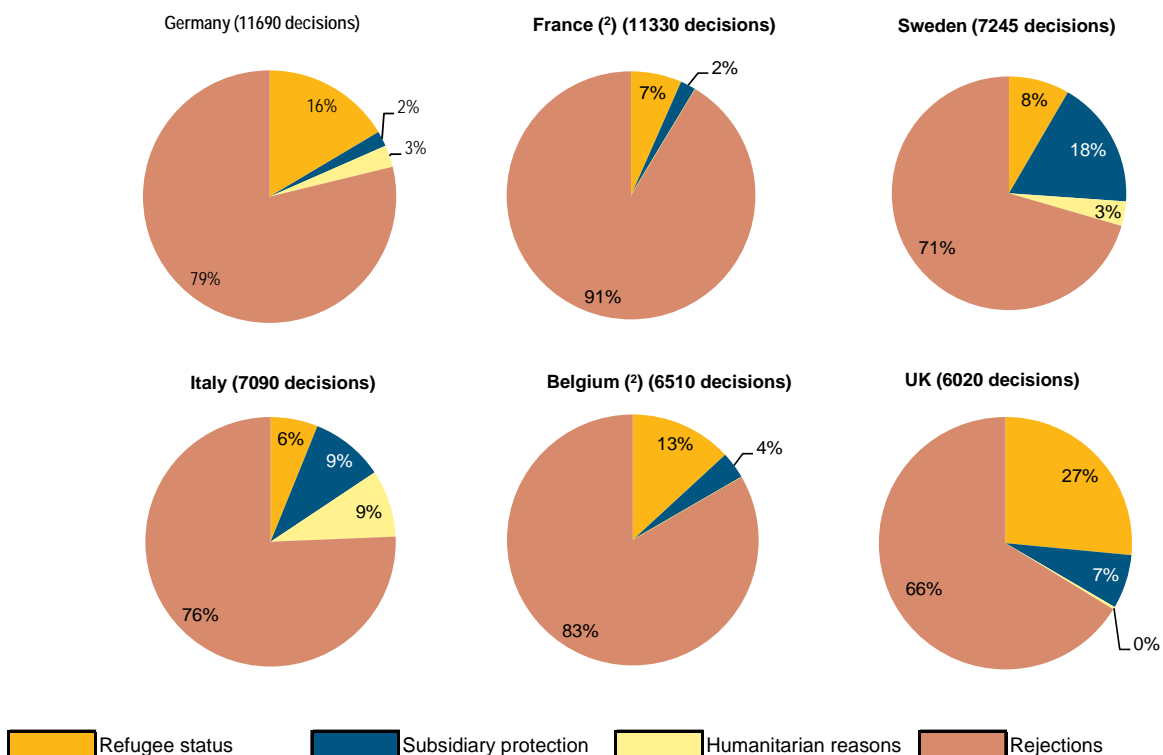
(¹) Relative to population as of 1st of January 2012 (provisional data), see methodological notes

* 2 or fewer asylum applicants recorded in the reference period.

: data are not available in the reference period.

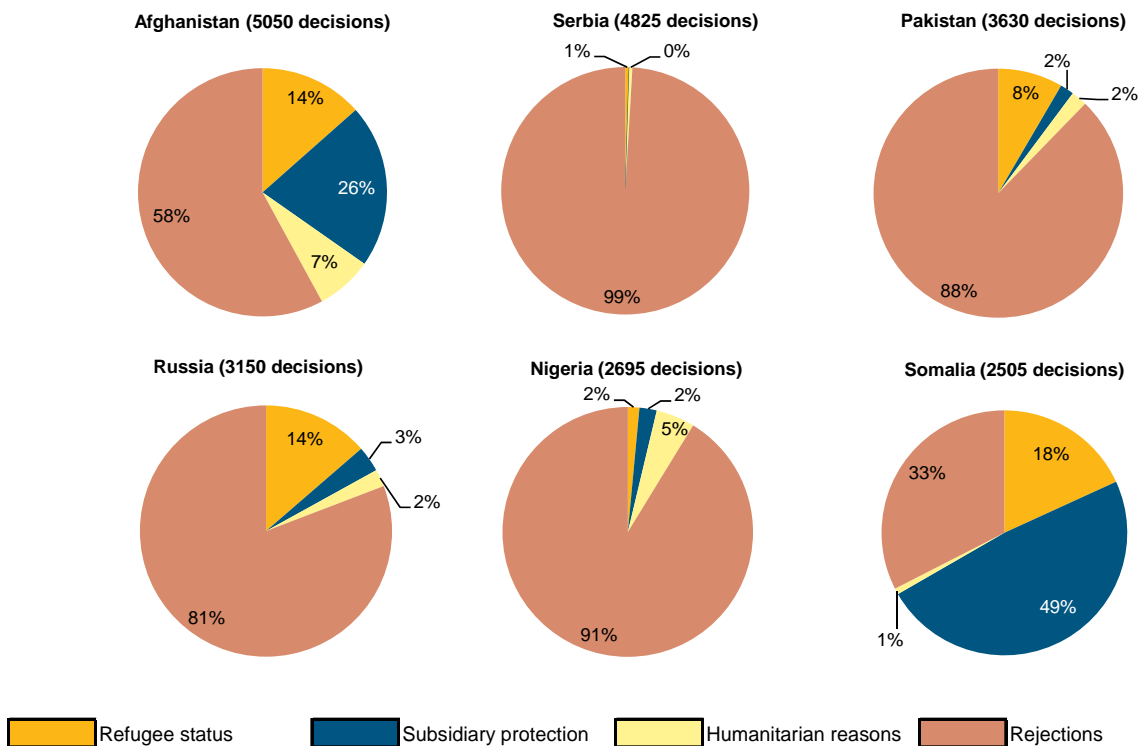
Source: Eurostat (online data code: migr.asyvbptzlm)

Figure 9: First instance decisions by outcome, selected Member States (¹), 1st quarter 2012



(¹) Member States selected here are those reporting the highest number of first instance decisions issued during Q1 2012
 UK – United Kingdom
 Humanitarian reasons not applicable for BE, FR
 Source: Eurostat (online data code: [migr_asydcfstg](#))

Figure 10: First instance decisions in the EU-27 (*) by outcome, selected citizenships (¹), 1st quarter 2012



(*) Data for NL are not available, see methodological notes
 (¹) Citizenship selected here are those for which the highest number of first instance decisions was issued during Q1 2012
 Source: Eurostat (online data code: [migr_asydcfstg](#))

One out of five first instance decisions in the EU-27 in Q1 2012 was positive

Table 8: First instance decisions by citizenship and outcome, selected Member States, 1st quarter 2012 (rounded figures) ⁽¹⁾

First instance decisions				
Refugee status	Subsidiary protection	Humanitarian reasons	Rejections	
GERMANY (11 690 decisions)				
Iraq	700 Syria	90 Afghanistan	190 Serbia	3 000
Iran	345 Somalia	45 Iraq	25 Afghanistan	730
Syria	190 Afghanistan	40 XK	10 MK	610
Other	690 Other	50 Other	100 Other	4 870
SWEDEN (7 245 decisions)				
Afghanistan	170 Somalia	515 Afghanistan	130 Serbia	940
Somalia	80 Afghanistan	365 Stateless	15 Afghanistan	455
Syria	60 Eritrea	225 Iraq	15 Somalia	405
Other	295 Other	180 Other	85 Other	3 305
BELGIUM (6 510 decisions)				
Russia	95 Afghanistan	195	Not applicable	Albania 715
Afghanistan	95 Somalia	10		Russia 525
Guinea	80 XK	5		XK 445
Other	585 Other	25		Other 3 745
OTHER (12 660 decisions)				
Russia	225 Somalia	425 Syria	105 Pakistan	1 140
Syria	195 Afghanistan	280 Russia	60 Afghanistan	1 125
Afghanistan	120 Iraq	130 Afghanistan	25 Russia	935
Other	560 Other	395 Other	120 Other	6 820
FRANCE (11 330 decisions)				
CD	90 Mali	50	Not applicable	Bangladesh 1 130
Sri Lanka	60 Guinea	30		CD 845
Russia	60 Afghanistan	20		Sri Lanka 760
Other	535 Other	125		Other 7 615
ITALY (7 090 decisions)				
Somalia	70 Somalia	195 Nigeria	125 Nigeria	1 385
Sudan	65 Afghanistan	120 Ivory Coast	120 Ghana	685
Afghanistan	45 Sudan	45 Pakistan	65 Mali	550
Other	255 Other	315 Other	310 Other	2 740
UNITED KINGDOM (6 020 decisions)				
Iran	205 Afghanistan	55 Somalia	5 Pakistan	905
Eritrea	145 Zimbabwe	40 Iran	5 Iran	410
Sudan	145 China	40 Sierra Leone	* Sri Lanka	355
Other	705 Other	280 Other	5 Other	2 315
EU-27 (62 545 decisions)				
Iran	960 Somalia	1 215 Afghanistan	370 Serbia	4 780
Iraq	925 Afghanistan	1 075 Nigeria	135 Pakistan	3 190
Afghanistan	680 Eritrea	265 Ivory Coast	120 Afghanistan	2 925
Other	4 690 Other	1 735 Other	895 Other	38 500

⁽¹⁾ Member States selected here are those reporting the highest number of first instance decisions issued during Q1 2012
 Syria – Syrian Arab Republic; CD – Congo, the Democratic Republic of the; XK – Kosovo / UNSCR 1244; MK – the Former Yugoslav Republic of Macedonia; BA – Bosnia and Herzegovina
 Source: Eurostat (online data code: [migr_asydcfstq](#))

Table 9: First instance decisions by outcome, 1st quarter 2012 (rounded figures)

	Total decisions	Total positive decisions	Refugee status	Subsidiary protection	Humanitarian reasons	Rejected
EU-27 (*)	62 545	13 070	7 255	4 290	1 525	49 475
Belgium	6 510	1 085	855	230	-	5 425
Bulgaria	155	40	5	30	-	115
Czech Republic	225	60	10	50	*	160
Denmark	870	370	155	185	30	500
Germany	11 690	2 475	1 925	225	325	9 215
Estonia	15	10	5	*	5	10
Ireland	260	15	15	*	-	245
Greece	2 880	15	10	5	5	2 865
Spain	575	110	65	40	*	470
France	11 330	975	750	230	-	10 355
Italy ⁽¹⁾	7 090	1 725	435	675	620	5 365
Cyprus	425	50	35	*	15	380
Latvia	65	10	*	10	-	50
Lithuania	80	10	*	5	-	70
Luxembourg	535	15	10	5	-	520
Hungary	330	90	20	45	20	240
Malta	250	115	10	105	115	20
Netherlands (**)	:	:	:	:	:	:
Austria	4 005	1 085	625	460	-	2 920
Poland	695	180	45	60	75	515
Portugal	55	25	5	20	-	25
Romania	455	10	10	*	*	445
Slovenia	30	5	*	5	-	25
Slovakia	100	45	*	35	10	55
Finland	655	265	65	160	40	390
Sweden	7 245	2 135	605	1 285	245	5 110
United Kingdom	6 020	2 035	1 595	415	20	3 985
Iceland	5	*	*	*	*	5
Liechtenstein	15	5	5	-	*	10
Norway	3 150	1 575	1 260	255	65	1 575
Switzerland	4 695	1 670	1 030	210	435	3 020

(*) EU-27 is based on data available

⁽¹⁾ See country information notes

(**) Data for NL are not available, see methodological notes

- represents data are not applicable

* represents 2 or fewer first instance decisions recorded in the reference period

: represents data are not available in the reference period

Source: Eurostat (online data code: [migr_asydcfstq](#))

15 % of all positive decisions of international protection issued at first instance in the EU-27 in Q1 2012 were granted to Afghans

Table 10: First instance decisions by destination country and outcome in the EU-27 (*), selected citizenships of asylum applicants, 1st quarter 2012 (rounded figures) ⁽¹⁾

First instance decisions				
Refugee status	Subsidiary protection	Humanitarian reasons	Rejections	
AFGHANISTAN - AF				
Germany	180 Sweden	365 Germany	190 Austria	745
Sweden	170 Belgium	195 Sweden	130 Germany	730
Belgium	95 Austria	190 Italy	20 Sweden	455
Other	240 Other	325 Other	30 Other	990
PAKISTAN - PK				
UK	140 UK	25 Germany	5 UK	905
Germany	110 Italy	25 Czech Republic	0 Greece	825
Italy	20 Denmark	5 Denmark	0 Germany	415
Other	35 Other	* Other	65 Other	1 040
NIGERIA - NG				
UK	15 Italy	35 Italy	125 Italy	1 385
Italy	10 UK	10 Germany	10 UK	215
Germany	5 France	10 Finland	* Germany	170
Other	* Other	* Other	* Other	680
OTHER				
Germany	1 510 Sweden	405 Italy	405 France	8 915
UK	1 290 UK	320 Malta	115 Germany	4 565
France	635 Italy	295 Germany	105 Belgium	4 170
Other	1 890 Other	745 Other	205 Other	15 115
SERBIA - RS				
Belgium	15 Belgium	* Sweden	10 Germany	3 000
Austria	5 Bulgaria	0 Denmark	5 Sweden	940
France	* Czech Republic	0 Germany	5 Belgium	290
Other	* Other	* Other	0 Other	545
RUSSIA - RU				
Austria	160 Poland	55 Poland	55 France	630
Belgium	95 Austria	25 Sweden	5 Belgium	525
France	60 Finland	20 Finland	5 Austria	470
Other	110 Other	* Other	* Other	925
SOMALIA - SO				
UK	95 Sweden	515 UK	5 Sweden	405
Germany	85 Italy	195 Sweden	5 Belgium	75
Sweden	80 Denmark	135 Germany	5 France	70
Other	195 Other	370 Other	* Other	265
NON-EU				
Germany	1 925 Sweden	1 285 Italy	620 France	10 355
UK	1 595 Italy	675 Germany	325 Germany	9 215
Belgium	855 Austria	460 Sweden	245 Belgium	5 425
Other	2 885 Other	1 870 Other	335 Other	24 485

(* Data for NL are not available, see methodological notes)

⁽¹⁾ Citizenships selected here are those for which the highest number of first instance decisions was issued during Q1 2012

* represents 2 or fewer first instance decisions recorded in the reference period

Source: Eurostat (online data code: [migr_asydcfstq](#))

Table 11: First instance decisions by outcome, 30 main citizenships of asylum applicants in the EU-27 (*), 1st quarter 2012 ⁽¹⁾

	Total decisions	Total positive decisions	Refugee status	Subsidiary protection	Humanitarian reasons	Rejected
Non-EU	62 545	13 070	7 255	4 290	1 525	49 475
Afghanistan - (AF)	5 050	2 125	680	1 075	370	2 925
Serbia - (RS)	4 825	45	25	*	20	4 780
Pakistan - (PK)	3 630	440	305	65	75	3 190
Russia - (RU)	3 150	600	430	105	70	2 550
Nigeria - (NG)	2 695	240	40	60	135	2 455
Somalia - (SO)	2 505	1 690	455	1 215	20	815
Iraq - (IQ)	2 485	1 200	925	225	55	1 285
Bangladesh - (BD)	2 250	45	25	15	10	2 200
Iran - (IR)	2 220	1 040	960	65	15	1 185
Kosovo - (XK)	1 885	100	45	25	30	1 785
Sri Lanka - (LK)	1 455	215	185	25	*	1 245
CD - (CD)	1 430	210	170	30	5	1 225
Syria - (SY)	1 385	955	595	255	110	425
Albania - (AL)	1 290	115	75	45	*	1 175
Turkey - (TR)	1 255	150	100	25	25	1 105
Georgia - (GE)	1 230	25	20	5	5	1 205
Algeria - (DZ)	1 170	25	15	10	*	1 145
Armenia - (AM)	1 155	50	15	10	20	1 105
Guinea - (GN)	1 145	195	125	55	15	950
MK - (MK)	1 090	5	5	*	*	1 085
China - (CN)	1 050	210	165	40	*	845
Ghana - (GH)	990	95	10	20	60	895
Eritrea - (ER)	945	595	315	265	15	350
Ivory Coast - (CI)	940	245	50	75	120	695
BA - (BA)	865	25	5	*	20	840
Mali - (ML)	740	105	10	70	25	635
Sudan - (SD)	640	310	255	60	*	325
Tunisia - (TN)	620	30	5	*	25	590
India - (IN)	595	15	5	*	5	580
Stateless	540	305	210	80	20	240
Other	11 325	1 670	1 035	375	260	9 660

(* Data for NL are not available, see methodological notes)

⁽¹⁾ Citizenships selected here are those for which the highest number of first instance decisions was issued during Q1 2012

* represents 2 or fewer first instance decisions recorded in the reference period

Source: Eurostat (online data code: [migr_asydcfstq](#))

METHODOLOGICAL NOTES

DATA SOURCES

The data used for this publication are provided to Eurostat by the Ministries of Interior, Justice or immigration agencies of the Member States. Data are based entirely on relevant administrative sources. Apart from statistics on new asylum applicants, these data are supplied by Member States according to the provisions of Article 4 of the [Regulation \(EC\) 862/2007](#) of 11 July 2007 on Community statistics on migration and international protection.

All data presented in this publication are rounded to the nearest 5.

All data presented in this publication are provisional (except as otherwise stated) and may be a subject to change.

DEFINITIONS AND COVERAGE

'Asylum applicant' means a person having submitted an application for international protection or having been included in such application as a family member during the reference period. 'Application for international protection' means an application for international protection as defined in Art.2(g) of [Council Directive 2004/83/EC](#), i.e. including requests for refugee status or for subsidiary protection status, irrespective of whether the application was lodged on arrival at border, or from inside the country, and irrespective of whether the person entered the territory legally (e.g. as a tourist) or illegally. In deciding when to regard an asylum application as having been lodged, the principles expressed in Article 4(1) of Council Regulation 2003/343/EC should be applied, i.e. 'An application for asylum shall be deemed to have been lodged once a form submitted by the applicant for asylum or a report prepared by the authorities has reached the competent authorities of the Member State concerned. Where an application is not made in writing, the time elapsing between the statement of intention and the preparation of a report should be as short as possible'. Applications submitted by persons who are subsequently found to be a subject of a Dublin procedure (Council Regulation (EC) No 343/2003) are included in the number of asylum applications. Within the same reference period every person being a subject of asylum application is counted only once, therefore repeat applications are not recorded if the first application has been lodged in the same reference period. However, such a repeat application will be recorded if lodged in a different reference month. It means that the aggregation of the monthly figures may overestimate the number of persons applying for international protection within the aggregated period (quarter or year).

In some Member States (**IT, MT and DK**) due to restrictions of the asylum procedure (e.g. time limits for lodging repeat application) repeat applications may be very rare. Therefore the number of new asylum applicants may equal or almost equal the number of asylum applicants.

The number of asylum applicants and the number of first instance decisions during the same reference period differs. This is due to the time lag between the date of asylum application and the date of the decision on asylum application. The duration of this time lag may vary considerably depending on the national asylum procedure and the administrative workload. Asylum application lodged in one reference period may therefore result in a decision in a later period, while some asylum decisions reported for that period may relate to the applications lodged in previous reference periods.

'New asylum applicant' means a person having submitted an application for international protection for the first time. Applications submitted by persons who are subsequently found to be a subject of a Dublin procedure are included in the statistics on new asylum applicants if such persons are also a subject of first asylum application. All Member States are requested to supply these data but their provision is voluntary. As persons are counted once only, statistics on new asylum applicants may be used for preparation of annual aggregates.

Person being a subject of **'a pending application'** means a person who is the subject of application for international protection under consideration by the responsible national authority at the end of the reference period. It includes the number of persons with pending applications at all instances of the administrative and/or judicial procedure.

'Rejected applicant' means a person covered by a first instance decision rejecting an application for international protection, including decisions considering applications as inadmissible or as unfounded and decisions under priority and accelerated procedures, taken by administrative or judicial bodies during the reference period.

'Person granted refugee status at first instance' means a person covered by a first instance decision granting refugee status, taken by administrative or judicial bodies during the reference period. Refugee status means status as defined in Art.2 (d) of Directive 2004/83/EC within the meaning of Art.1 of the Geneva Convention relating to the Status of Refugees of 28 July 1951, as amended by the New York Protocol of 31 January 1967. According to the Art.2(c) of that Directive refugee means a third country national who, owing to a well-founded fear of being persecuted for reasons of race, religion, nationality, political opinion or membership of a particular social group, is outside the country of nationality and is unable or, owing to such fear, is unwilling to avail himself or herself of the protection of that country, or a stateless person, who, being outside of the country of former habitual residence for the same reasons as mentioned above, is unable or, owing to such fear, unwilling to return to it.

'Person granted subsidiary protection status at first instance' means a person covered by a first instance decision granting subsidiary protection status, taken by administrative or judicial bodies during the reference period. Subsidiary protection status means status as defined in Art.2 (f) of Directive 2004/83/EC. According to the Art.2(e) of that Directive a person eligible for subsidiary protection means a third country national or a stateless person who does not qualify as a refugee but in respect of whom substantial grounds have been shown for believing that the person concerned, if returned to his or her country of origin, or in the case of a stateless person, to his or her country of former habitual residence, would face a real risk of suffering serious harm and is unable, or, owing to such risk, unwilling to avail himself or herself of the protection of that country.

'Person granted authorisation to stay for humanitarian reasons at first instance' means a person covered by another first instance decision granting authorisation to stay for humanitarian reasons under national law concerning international protection, taken by administrative or judicial bodies during the reference period. It includes persons who are not eligible for international protection as currently defined law but are nonetheless protected against removal under the obligations that are imposed on all Member States by international refugee or human rights instruments or on the basis of principles flowing from such instruments. Examples of such categories include persons who are not removable on ill health grounds and unaccompanied minors.

'Dublin procedure' means a procedure according to the Council Regulation (EC) No 343/2003, establishing the criteria and mechanisms for determining the Member State responsible for examining an asylum application lodged in one of the Member States by a third-country national.

COUNTRY INFORMATION

Due to the implementation of a new computing system, since January 2012 NL is temporarily unable to provide statistics on asylum applications disaggregated by citizenship, age and sex and on first instance decisions. Only the total number of applicants per month is available.

The number of rejections at first instance in **Italy** includes a number of recommendations to issue an authorization to stay for humanitarian reasons. These recommendations are issued by the National Asylum Commission to the Police. Therefore the number of first instance rejections can be overestimated. Indeed, some individuals might be counted twice under the same reference period: first as a person rejected and recommended for an authorisation to stay for humanitarian reasons and subsequently as a person granted an authorisation to stay for humanitarian reasons.

Not all EU-27 population figures are based on the latest census. The following countries transmitted to Eurostat post-census population estimates for 1 January 2012 based on the results of the 2011 Censuses: Bulgaria, Czech Republic, Cyprus, Latvia, Luxembourg, Portugal and Slovakia

ABBREVIATIONS

Belgium (BE), Bulgaria (BG), Czech Republic (CZ), Denmark (DK), Germany (DE), Estonia (EE), Ireland (IE), Greece (EL), Spain (ES), France (FR), Italy (IT), Cyprus (CY), Latvia (LV), Lithuania (LT), Luxembourg (LU), Hungary (HU), Malta (MT), the Netherlands (NL), Austria (AT), Poland (PL), Portugal (PT), Romania (RO), Slovenia (SI), Slovakia (SK), Finland (FI), Sweden (SE), the United Kingdom (UK), Iceland (IS), Lichtenstein (LI), Norway (NO) and Switzerland (CH).

EU ASYLUM POLICY

The Directorate-General for Home Affairs (DG HOME) is responsible for developing EU policies on asylum. For more information please see:

http://ec.europa.eu/dgs/home-affairs/index_en.htm

Further information

Eurostat Website: <http://ec.europa.eu/eurostat>

Data on "Population and Social conditions, Asylum":

<http://epp.eurostat.ec.europa.eu/portal/page/portal/population/data/database>
(Select "International Migration and asylum" and "Asylum")

More information about "Population and social conditions":

<http://epp.eurostat.ec.europa.eu/portal/page/portal/population/introduction>

European Statistical Data Support:

Contact details for this support network can be found on our Internet

site: <http://ec.europa.eu/eurostat/>

Manuscript completed on: 30.07.2012

Data extracted on: 16.07.2012

ISSN 1977-0340

Catalogue number: KS-QA-12-008-EN-N

© European Union, 2012