



Federal Office
for Migration
and Refugees

Beneficiaries of international protection travelling to their country of origin – Legal framework and practices in Germany

Asylum and Migration Policy Event 2019, EMN Belgium
10 December 2019, Brussels

Janne Grote, EMN Germany / Federal Office for Migration and Refugees (BAMF)

Research Centre

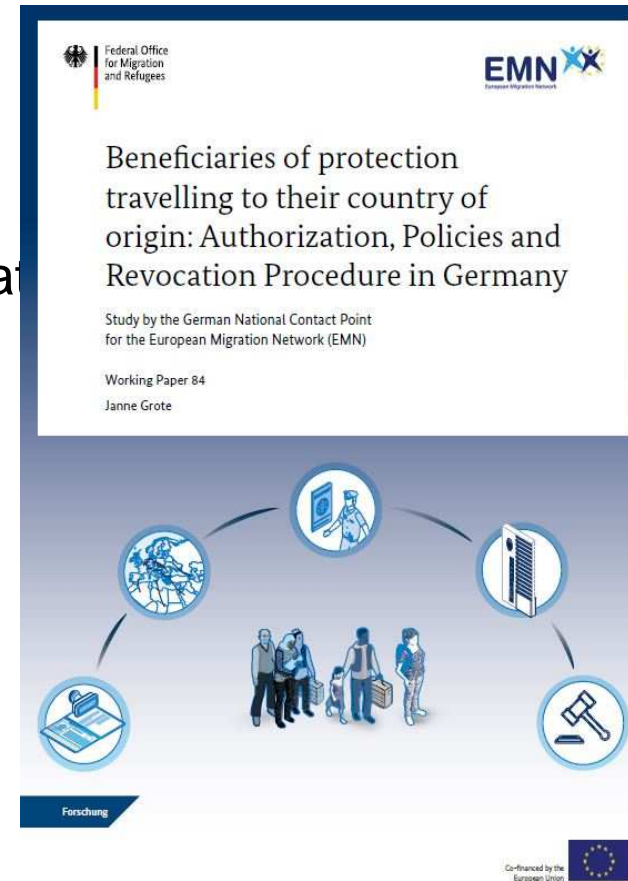
Structure / Four phases

Phase 1: Travelling to the country of origin

Phase 2: Learning about a travel and notification

Phase 3: Revocation procedure

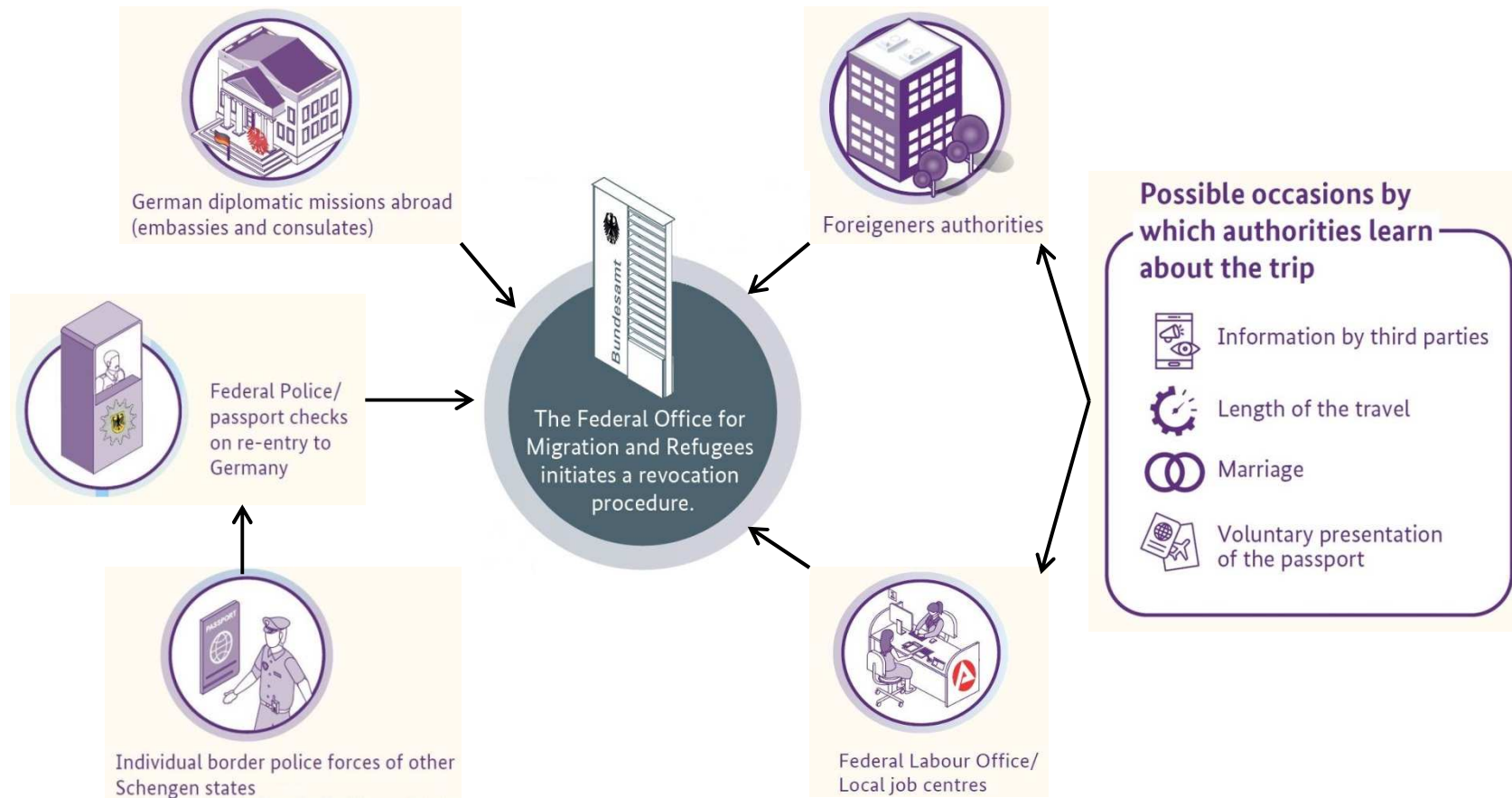
Phase 4: Effects on the right of residence



Phase 1: Travelling to the country of origin



Phase 2: Learning about a travel and notification



Legal framework

Cessation clauses of the Geneva Convention (Article 1C Nos. 1-6)



Cessation clauses (Articles 11 and 16 of the Directive 2011/95/EU)
Withdrawal procedure (Articles 44 and 45 of the Directive 2013/32/EU)



Lapse of the protection status by law (Section 72 of the Asylum Act)
→ contradicts with Article 45 of the Asylum Procedure Directive



Revocation Procedure (Section 73 and 73b of the Asylum Act)
→ Individual assessment

Phase 3: Incident-related revocation procedure



Selection of review criteria in the revocation procedure

Fundamental criteria:

- Voluntariness of the travel
- Intention to re-avail him- or herself of the protection of the country of origin
- Effective re-availment of protection

Specific criteria:

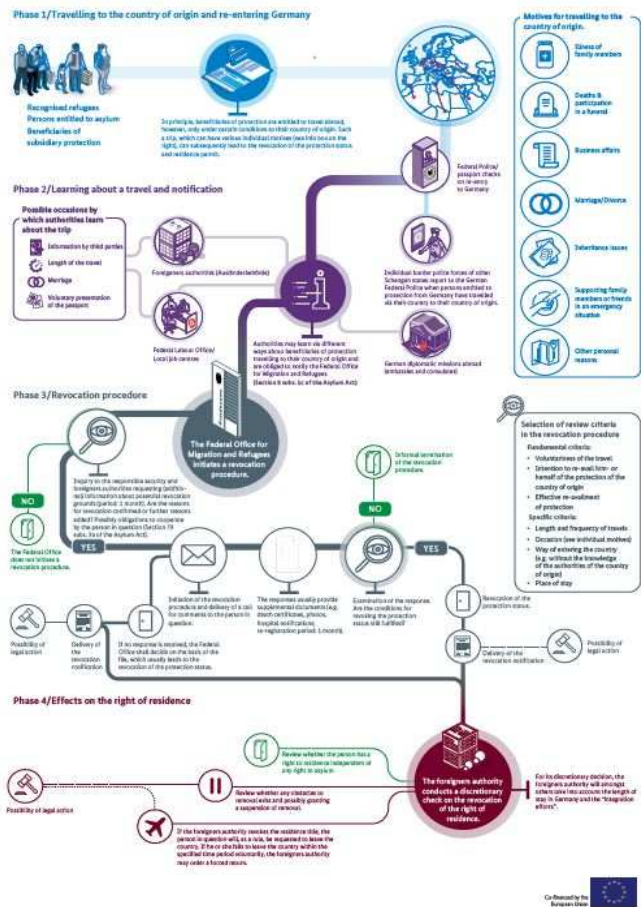
- Length and frequency of travels
- Occasion (see individual motives)
- Way of entering the country (e.g. without the knowledge of the authorities of the country of origin)
- Place of stay

Phase 4: Effects on the right of residence

Phase 4/Effects on the right of residence



Beneficiaries of protection travelling to their country of origin Authorization, Policies and Revocation Procedure in Germany



Design of the Infographics:
Burak Korkmaz:
<https://www.burakkorkmaz.de/>

Thank you
for your attention!

Contact

Federal Office for Migration and Refugees
EMN Germany / Migration, Integration and Asylum Research Centre
Frankenstraße 210
90461 Nürnberg
Germany

Contact
Janne Grote
Janne.grote@bamf.bund.de
www.emn-germany.de / www.bamf.de

